

# KAZU

— Premium —  
**AFRICAN CASHEW**



**MADE IN BENIN**





## WHO ARE WE?

### BENIN CASHEW SA

Benin Cashew SA is established as a joint venture between CDC Benin and ARISE IIP.



Caisse des Dépôts et Consignations du Bénin (**CDCBénin**) is a public financial institution in Benin, Africa. It acts as a sovereign wealth fund, responsible for collecting, securing, and managing various deposits, administrative and judicial consignments, and other public or private funds. Essentially, it's a financial institution focused on mobilizing and managing resources to fund development projects in Benin.



ARISE Integrated Industrial Platforms (**ARISE IIP**) is a pan-African infrastructure developer and operator driving the creation of sustainable industrial ecosystems. Active in more than 14 countries in Africa, ARISE IIP designs, finances, builds, and operates bespoke industrial zones that strengthen local value chains, promote exports, and generate long-term employment.



## OUR FACILITY LAUNCH

# KAZU

- ✔ Premium African Cashew Kernel Brand.
- ✔ State-of-the-art, technologically advanced processing Facility to process premium-quality Cashew Kernels
- ✔ Installed Capacity is 100,000 MT of Raw Cashew Nut in Multiple Shifts
- ✔ All Cashews are processed and packed in our owned facilities.
- ✔ Apart from conventional, we are participating in the trade of traceable, sustainable, and organic cashew nut supply chain models.
- ✔ We have an Integrated Cashew Nut Shell Liquid Processing facility as well to process up to 30000 MT of Raw Cashew Nut Shell and Supply premium quality CNSL and Charcoal as well.





# INFRASTRUCTURE AT SCALE

Integrated approach to storage, drying, processing  
& and packaging for exports.



**15 Warehouses** to store  
**200,000+** tons of RCN for full  
year processing



Fully Concreted drying area  
of **75,000 sqm** in between  
warehouses for RCN drying



**5 Processing Units** with a  
combined capacity of **360**  
**tons** per shift







# THE CASHEW JOURNEY

- 0) Raw Cashew Storage
- 1) Calibration Section
- 2) Cooking Section
- 3) Shelling Section
- 4) Borma Section
- 5) Humidification Section
- 6) Peeling Section
- 7) Color Sorter Section
- 8) Grading Section
- 9) Manual Peeling Section
- 10) IR / UV Section
- 11) Packing Section
- 12) Export Storage Section



0 Raw Cashew Storage



1 Calibration Section



2 Cooking Section



3 Shelling Section



4 Borma Section



5 Humidification Section



6 Peeling Section



7 Color Sorter Section



8 Grading Section



9 Manual Peeling Section



10 IR / UV Section



11 Packing Section



12 Export Storage Section



# BRAND INDENTITY

Country	Certificates	Capacity (RCN) MT	Capacity ( KERNEL) MT
BENIN	HACCP, BRC , KOSHER, HALAL, SMETA, FDA Registered Organic and Rainforest Alliance Certified	100,000	21,500
TOTAL		IN Multiple SHIFT	21,500

# PRODUCTS TAILORED FOR THE GLOBAL MARKET

Whole Cashew	Broken Cashew	Other Grades
WW180	FS / WS	KTP
WW210	SS	PUK3
WW240	LWP	OW
WW320	LP	OP
WW450	SP	LP2
SW240	WSP/ SWP	DW2
SW320	SSP A	KTW
SW450	SSP B	
CW240	BB	
CW320		
CW450		
SSW		
DW		
PUK1/ SW1		
PUK2/ SW2		





# CERTIFICATION THAT BUILDS TRUST



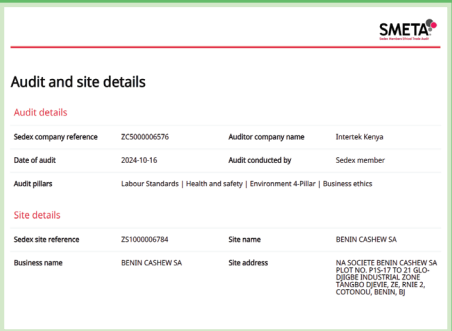
Rain Forest Alliance Certificate



FDA 2025



HALAL Certified



SMETA (4P) Certified



BRCGS Certified



Kosher Certified



## PROCESSED CASHEW SNAPSHOTS

### White Wholes



WW180



WW240



WW320



WW450

### Scorched Wholes



SW240



SW320



SW450

### Splits or Pieces



White Splits  
FS WS



Large White  
Pieces



Scorched  
Splits



Small White  
Pieces



Small Scorched  
Pieces



Scorched  
Pieces

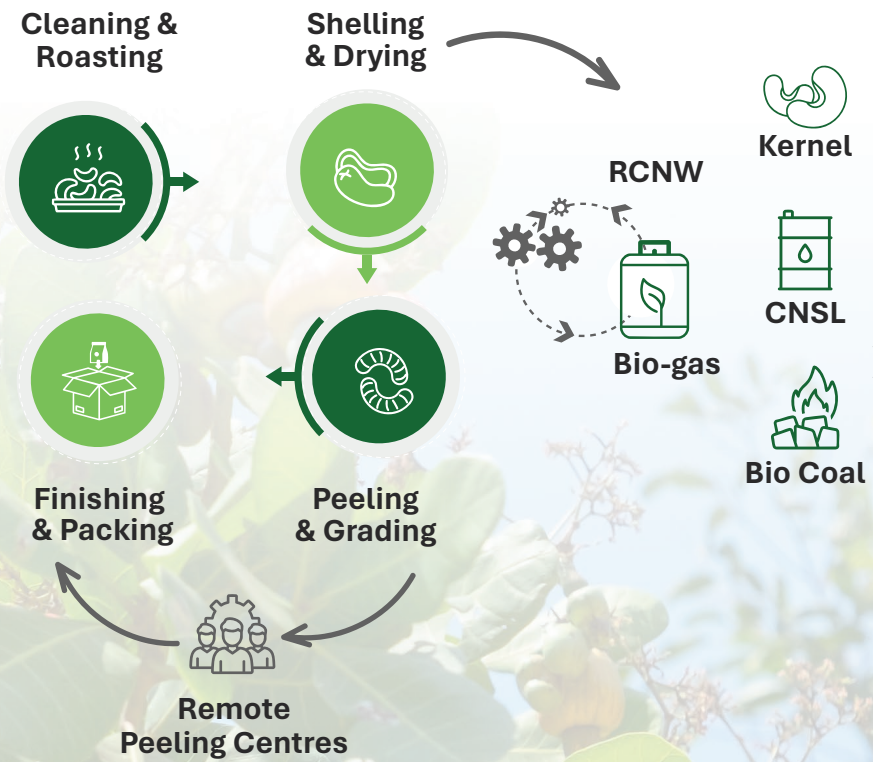


# END TO END SUPPLY CHAIN

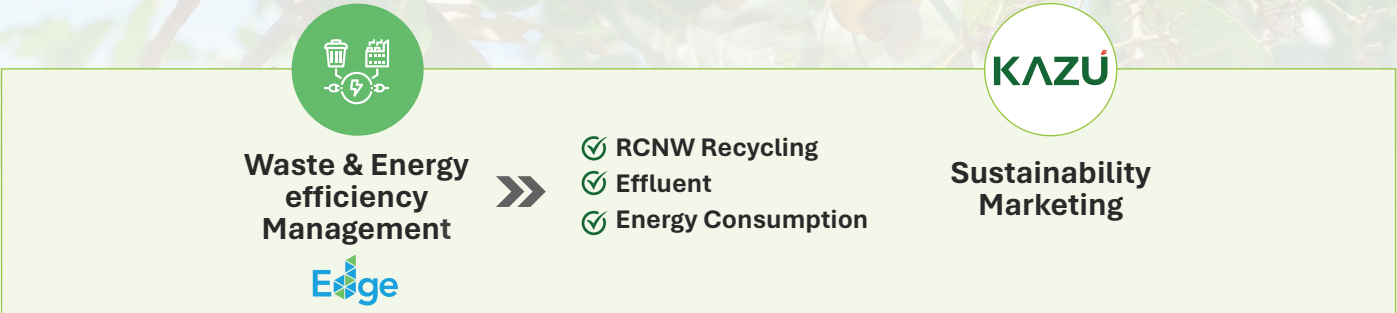
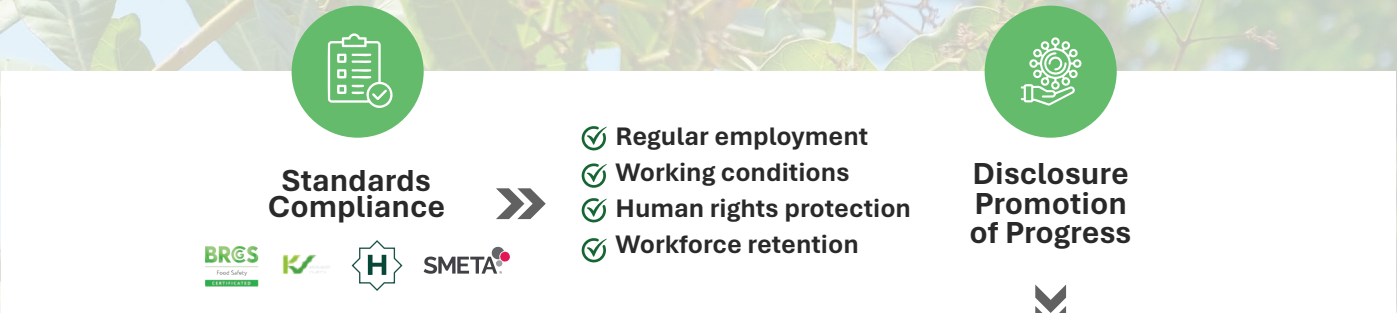
## Upstream



## Processing




## Downstream







# WORKFORCE BUILT TO IMPACT



Employment generation of more than **3,000** people.




**100%** Compliance with local rules and regulations for labour policies.




Focused on promoting the local Beninese talent.



Zero gender discrimination and Zero bribery policy.



More than **85%** of the workforce is female.

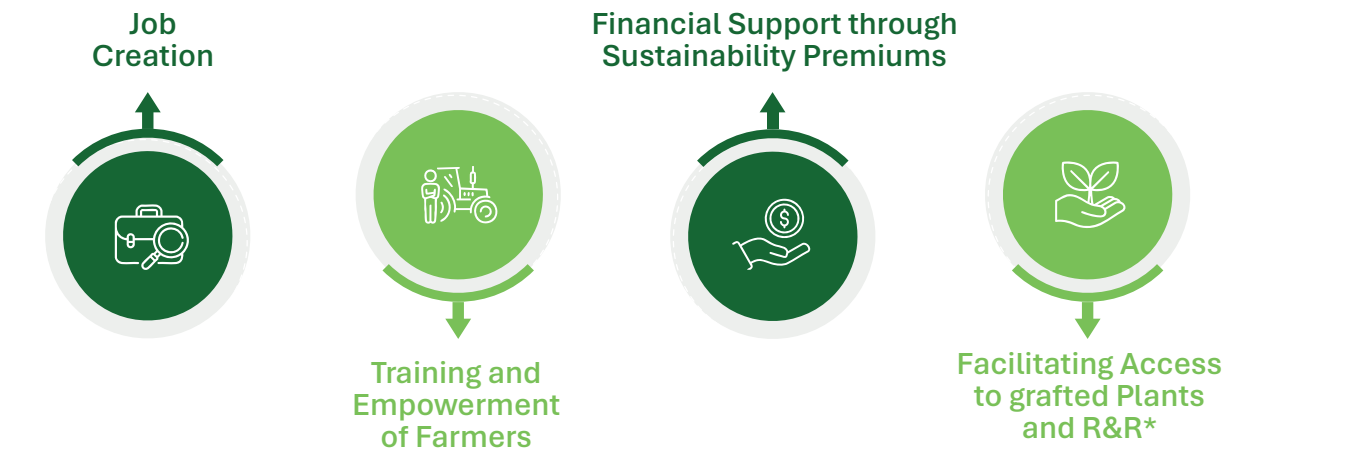


Effective training programme regularly for health, safety, and environment-related aspects.

# HR & CSR INITIATIVES

# CLOSE CONNECTION TO THE GROUND

Benin Cashew SA is actively engaged in various corporate social responsibility (CSR) activities to support local communities and promote sustainable agricultural practices.



- Benin Cashew SA has recruited 67 Field Officers and 06 Field Supervisors for farmers’ advisory purposes.
- Field team equipped with smartphones and AFIS application for data collection, traceability, and others.
- Field team equipped with 73 bikes to facilitate the implementation of activities.





# ORGANIC CASHEWS



Experience the taste of our premium Organic Cashews, handpicked from certified organic farms, sustainably sourced and grown without the use of synthetic pesticides or fertilizers.

Our Organic Cashews are compliant with European Organic Regulations (EU 2018/848), NOP, and COR Standards.

Our cashews come with 100% traceability from farms to fork. Every nut can be traced back to its origin and is ethically grown on smallholder farms using sustainable, environmentally conscious practices.

Explore our collection of traceable, organic cashew products and be part of a movement toward greater food transparency.

# SUSTAINABLE CASHEW



At Benin Cashew SA, we're proud to be Rainforest Alliance Certified. It's a symbol of our commitment to sustainable farming, ethical sourcing, and respect for people and nature. Our cashews are grown up by small-scale farmers engaged in family farming with the expert advice of our field supervisors recruited and equipped for this purpose. From farm to final product, every cashew is traceable and processed to the highest standards. By choosing our cashew products, you're making a meaningful impact. Not just enjoying naturally exceptional cashews but also supporting sustainable agricultural practices and fair working conditions.

- ✔ More than 7,072 smallholder farmers have been trained and empowered in cashew production areas.
- ✔ Rainforest Alliance support and certification for 2,816 producers.
- ✔ Implementation of a system for monitoring, evaluating, and resolving child labor, forced labor, violence, discrimination, and harassment in the supply chain.
- ✔ Distribution of Rainforest Alliance sustainability differential to certified farmers.
- ✔ Working with customers to obtain and implement sustainability investments.
- ✔ Facilitation of access to grafted plants by partner farmers.
- ✔ Facilitation of access to Rehabilitation and renovation subvention.
- ✔ Connecting farmers with plantation maintenance and management service providers.

#Follow the frog to a better Cashew nut and a better future.





# KAZU

✉ [cashew@arisenet.com](mailto:cashew@arisenet.com) ☎ +971 504 508 141

📍 Plot no. P1S-17 to 21, Glo-Djigbé Industrial Zone, Ze, Republic of Benin.

